

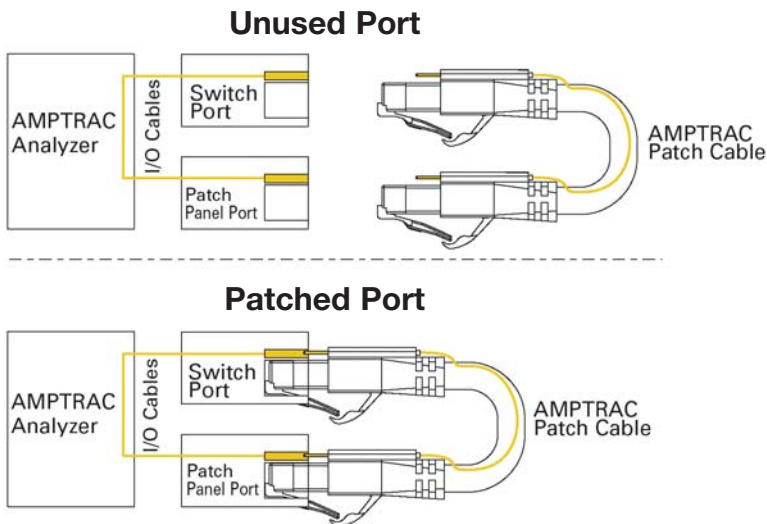
# AMPTRAC™

## Intelligent Infrastructure Management System



# System Overview

## AMPTRAC Hardware Overview

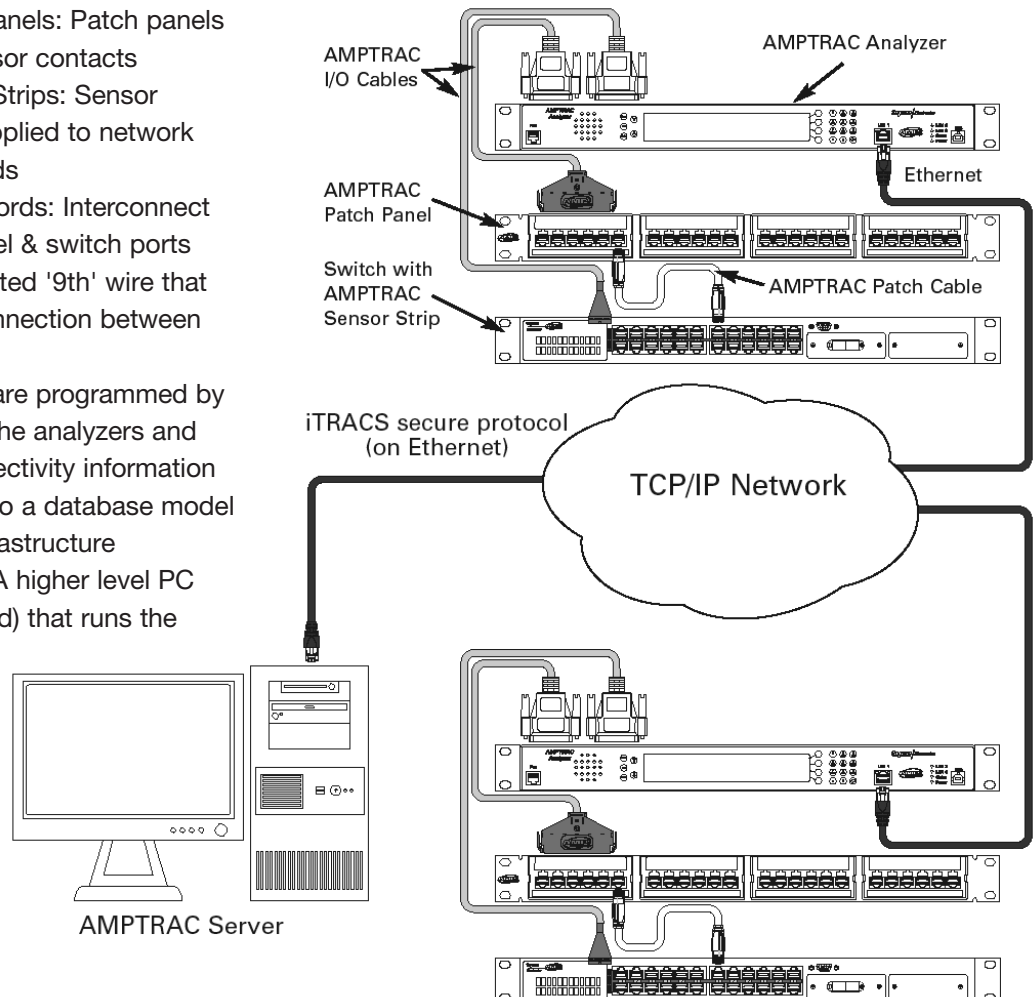


## AMPTRAC Basic Operating Principle

- Robust 9th wire in patch cords establishes open and closed circuits which can be monitored
- Analyzer monitors open/closed circuit and tracks connectivity
- Analyzer sends data to AMPTRAC IM Software data base

## AMPTRAC System and Components

- AMPTRAC Analyzer: The Device that tracks the connections between sensor contacts and communicates with AMPTRAC IM Software database
- AMPTRAC I/O cables: Connect sensor contacts (patch panel and electronics) to analyzer
- AMPTRAC Patch Panels: Patch panels with integrated sensor contacts
- AMPTRAC Sensor Strips: Sensor contacts that are applied to network electronics port fields
- AMPTRAC Patch Cords: Interconnect between patch panel & switch ports and have an integrated '9th' wire that is used to make connection between sensor contacts
- IM Software: Software programmed by iTRACS, manages the analyzers and correlates the connectivity information from the analyzers to a database model of the customer infrastructure
- AMPTRAC Server: A higher level PC (often Rack mounted) that runs the IM Software



**Physical Layer Easily Added to CMDB**

## AMPTRAC Analyzers

The AMPTRAC Infrastructure Management System Analyzer discovers connects/disconnects and communicates the port ID information in real-time to the AMPTRAC database software over a TCP-IP connection. When a patch cord is inserted or removed from a port, the AMPTRAC sensory circuit immediately notifies the database software to update and document the change in connectivity. This provides network administrators responsible for small to enterprise wide multi-site networks, with vital time saving up-to-the minute information about the status of their network from the hardware layer up. Any change in connectivity can be checked and authorization verified, and if appropriate, action taken if the action is unauthorized.

To gain all this information every port on patch panels and switches is equipped with a sensor pad. All sensor pads are connected to the analyzer via I/O cables. To connect the diverse monitored devices ten different I/O cable types are available (see page 6).

All products in this catalog that need I/O cable connection to analyzer are marked with one or more red numbers (e.g. 1) – determining type and quantity of the needed I/O cables (see page 6).

### Product Facts:

- Adds the physical layer to your network documentation system
- Universal analyzer design
  - Analyzer can be configured as a master or slave unit
  - Any unit can directly communicate to database server or through another analyzer
  - Virtually unlimited in number of ports/drops which can be monitored
- Very flexible design and implementation allowing for use in office buildings, data centers and remote/branch offices
- Analyzers sold with AMPTRAC IM Software license (see next page for description of software)
- Available in 336 port and 168 port versions (19", 1U)
- Shallow depth at 6.25" (160 mm)
- Suitable for shelf or 19" rack or cabinet mounting
- Secured, keyed and reliable DB25 connection for I/O cables
- Large 4 line LCD display providing interactive communications with the database
- Future support of PDA, electronic tablet or computer to analyzer
- Three 10/100BASE-TX Ethernet ports provided (1 in front, 2 in rear) to provide connection to LAN and server as well as allow analyzer to communicate via another analyzer
- Use of latest and current circuitry design
- Minimum heat dissipation – no concerns over heat management in rack or cabinet
- Low power consumption and long lifetime



Description	Ports Monitored	With 1 Year SLA	With LCD	With iTRACS IM Software	Part Number
Analyzer (div. Power Cords)	336	●	●	●	3-1591306-X
Analyzer (div. Power Cords)	168	●	●	●	4-1591306-X

**NOTE:** A complete channel connection to a work area outlet passes through two monitored ports, the network equipment (switch) and the patch panel. Therefore, each active channel monitored requires two analyzer ports.

### International Power Supplies:

All products are supplied with the required power cord. To specify the correct power cord for your country substitute the number below for the '-x' suffix in the order code. The most common types are shown below – international types also available on request.



**European Standard**  
Suffix: -2



**Switzerland**  
Suffix: -3



**Italy**  
Suffix: -4



**Denmark**  
Suffix: -5



**Great Britain and Ireland**  
Suffix: -7



## AMPTRAC Infrastructure Management Software

### Product Facts:

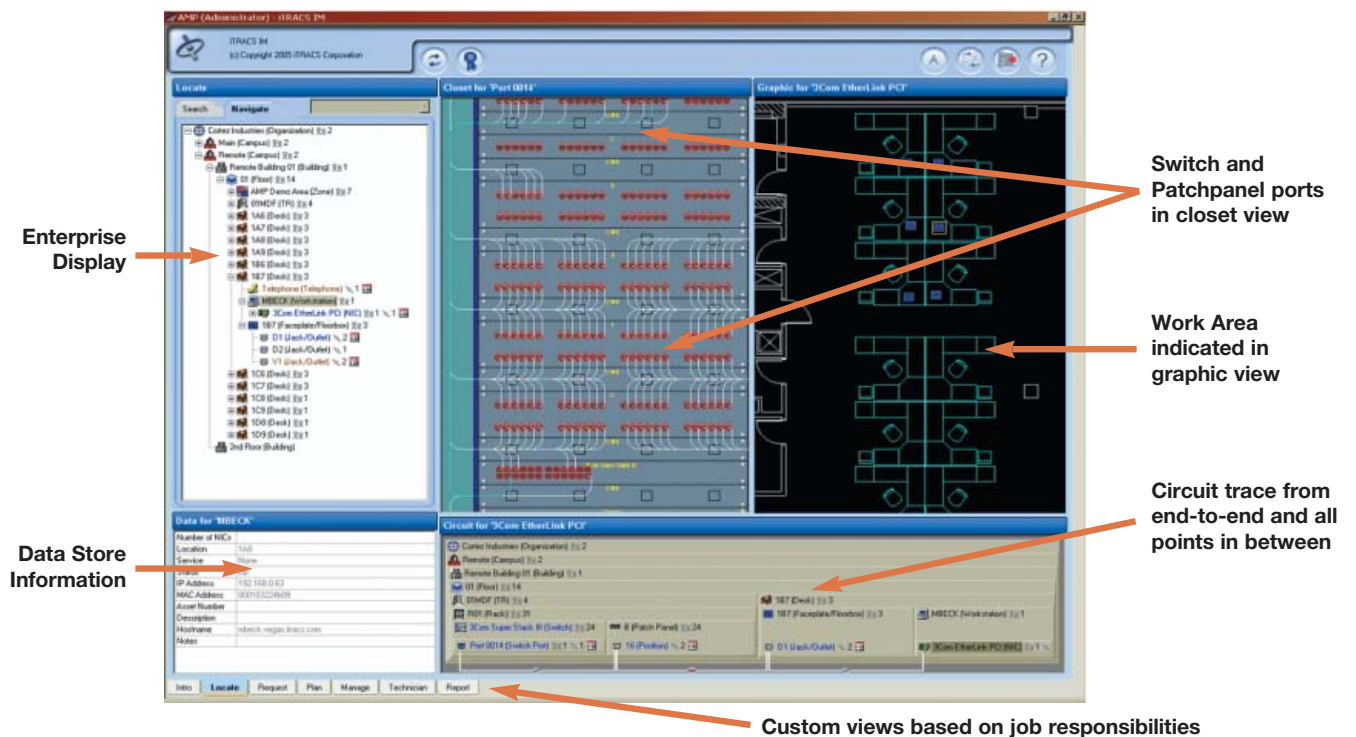
- Fully automated documentation system
- Real time monitoring
- Automatic database update on changes
- Self-discovers patch cords
- Event logs and data base reports
- Programmable alerts
- Automated work order processing
- Auto-discovers IP devices
- Automatic re-synchronization on power outages
- User management
- Supports ITIL best practices
- ISO 20000 and BS 15000 compliant
- CSV data import
- Easy to use and intuitive menu structure
- Upgradeable to iPLM incl. API and SDK

AMPTRAC Infrastructure Manager (IM) Software has been primarily designed for customers of AMP NETCONNECT products, as it functions in tandem with AMPTRAC hardware. The software is designed to explore, discover and map the connectivities of the customer network. It is further designed to simplify the process of all future moves, adds and changes (MACs) of end-users. The software allows simultaneous access by a spectrum of department representatives; these include help desk, planning, network administration, supervision and technicians.

The AMPTRAC Infrastructure Manager System creates an automated, accurate, real-time physical layer management system. This combined system proactively responds to changes in connectivity and intelligently records your cabling system and its devices with accurate documentation. You reduce costs by eliminating timeconsuming manual work order processes. You also maximize your existing network investment by identifying under-utilized assets.

AMPTRAC IM Software is ideally suited to customers with complex data/telecom networks and critical applications. Examples include financial institutions, insurance providers, data centers, high security government facilities, military defense facilities, airports, medical centers, universities and corporate headquarters.

These customers and clients share the difficult management of complicated networks, requiring accurate record-keeping, high security, and frequent MACs. The simplification of the work order process also provides valuable benefits to client networks of any size, from small to enterprise network.



Description	Part Number
AMPTRAC IM Software with one-year Gold Plus Service Level Agreement	<b>sold with Analyzer</b>
AMPTRAC IM Software Concurrent User Pack (5 additional users)	<b>0-1479979-1</b>

## Cat. 6 AMPTRAC Ready! PCB Patch Panels



### Product Facts:

- 19", 1 U, RJ-45 patch panel with 24 ports
- AMPTRAC Ready! version: prepared for AMPTRAC upgrade
- Full AMPTRAC version: fully equipped with AMPTRAC functionality
- Up to 10 GBit/s (shielded version)
- LSA+ tool compatible enhanced 110 IDC blocks
- Rear cable management
- Universal wiring – T568 A or B wiring pattern
- Front and rear I/O cable connection



Description	Color	Part Number	I/O Cable(s)
Shielded Cat. 6 Full AMPTRAC 24 port patch panel	black (RAL 9005)	0-1644042-1	1
Shielded Cat. 6 AMPTRAC Ready! 24 port patch panel	black (RAL 9005)	0-1644042-2	-
Shielded Cat. 6 AMPTRAC Ready! 24 port patch panel	light grey (RAL 7035)	0-1644042-3	-
Unshielded Cat. 6 Full AMPTRAC 24 port patch panel	black (RAL 9005)	0-1711147-1	1
Unshielded Cat. 6 AMPTRAC Ready! 24 port patch panel	black (RAL 9005)	0-1711147-2	-
AMPTRAC Upgrade Kit with front I/O port	black	0-1711148-1	1
AMPTRAC Upgrade Kit with rear I/O port	black	0-1711148-4	2



## Unloaded AMPTRAC Ready! SL Jack Patch Panels

### Product Facts:

- 19", 1 U, unloaded flushmount patch panel to be equipped with up to 24 SL Jacks
- AMPTRAC Ready! version: prepared for AMPTRAC upgrade
- Full AMPTRAC version: fully equipped with AMPTRAC functionality
- AMPTRAC functionality not applicable for jacks with dustcover

Description	Color	Part Number	I/O Cable(s)
Full AMPTRAC unloaded patch panel	black (RAL 9005)	0-1711278-1	1
AMPTRAC Ready! unloaded patch panel	black (RAL 9005)	0-1711278-2	-
AMPTRAC Ready! unloaded patch panel	light grey (RAL 7035)	0-1711278-3	-
AMPTRAC Upgrade Kit with front I/O port	black	0-1711148-1	1
AMPTRAC Upgrade Kit with rear I/O port	black	0-1711148-4	2



## UTP SL 110C Jack Patch Panels (w/o Rear Cable Management)

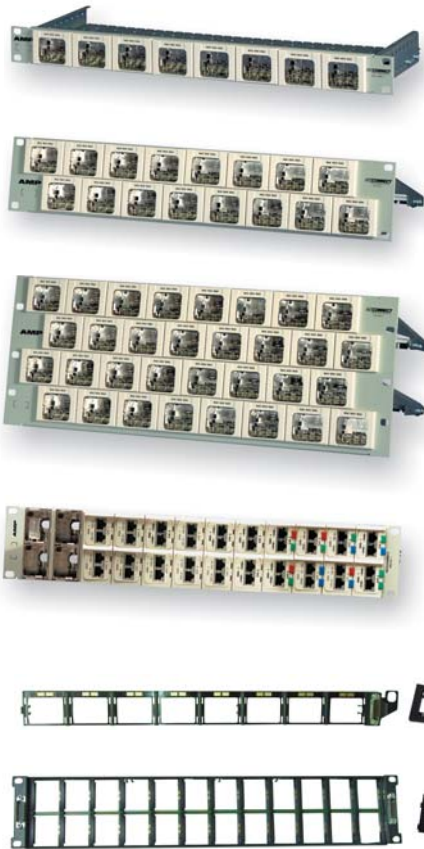
### Product Facts:

- Available in standard straight version or in angled version for improved cable and space
- Uses AMP NETCONNECT high-performance SL Series 110C Modular Jacks
- I/O connection made with 110C Plug'n'Play cable assembly
- Cost-effective AMPTRAC ready solution:  
install AMPTRAC patch panels now and analyzer and software later
- Cat. 5E and 6 patch panels come with Modular Jacks bagged separately (unloaded) for field termination with SL Series Modular Jack Termination Tool.

Description	Type	Height	Part Number	I/O Cable(s)
Unshielded Cat. 6, 24 port panel	Straight	1 U	0-1435326-1	3
Unshielded Cat. 5E, 24 port panel	Straight	1 U	0-1435367-1	3
Unshielded Cat. 6, 48 port panel	Straight	2 U	0-1435327-1	3 3
Unshielded Cat. 5E, 48 port panel	Straight	2 U	0-1435368-1	3 3
Unshielded Cat. 6, 24 port panel	Angled	1 U	0-1499616-1	3
Unshielded Cat. 5E, 24 port panel	Angled	1 U	0-1499618-1	3
Unshielded Cat. 6, 48 port panel	Angled	2 U	0-1499617-1	3 3
Unshielded Cat. 5E, 48 port panel	Angled	2 U	0-1499619-1	3 3



## AMP CO Plus Patch Panels



### Product Facts:

- 19" patch panel for AMP CO Plus inserts (inserts sold separately)
- Performance up to 2,0 GHz
- Straight cable exit plus management bar
- Kit includes shielded housings, edge connectors, frames and mounting material incl. grounding bolt

-X	Color
-1	light grey (RAL 7035)
-3	black (RAL 9005)

Description	Max. AMPTRAC ports	Height	Part Number
8 insert panel	16	1 U	0-1394576-X
16 insert panel	32	2 U	0-1394573-X
32 insert panel	64	4 U	0-1394575-X
24 insert HD panel	48	2 U	0-1394574-X

Description	Height	Part Number	I/O Cable(s)
ACO upgrade kit for 8 insert panel	1 U	0-1711326-1	1
ACO upgrade kit for 16 insert panel	2 U	0-1711326-2	1 1
ACO upgrade kit for 32 insert panel	4 U	0-1711326-4	1 1 1 1
ACO faceplates for Cat. 6 (for 0-1711326-X)*	–	0-1711229-8	–
ACO faceplates for Cat. 5 (for 0-1711326-X)*	–	0-1711298-8	–
ACO faceplates neutral (for 0-1711326-X)	–	0-1711232-8	–
ACO upgrade kit for 24 insert HD panel	2 U	0-1711228-1	1 1
ACO faceplates for Cat. 6 (for 0-1711228-1)*	–	0-1711240-8	–
ACO faceplates for Cat. 5 (for 0-1711228-1)*	–	0-1711243-8	–
ACO faceplates neutral (for 0-1711228-1)	–	0-1711249-8	–

\* Cat. 6 & Cat. 5 faceplates support single and dual RJ-45 inserts

## MRJ21 Shielded Patch Panels

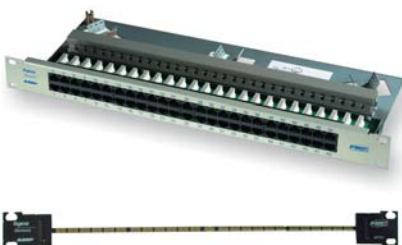


### Product Facts:

- High-density, small form factor connectivity
- Factory terminated and tested
- Modular, pluggable design
- 4 pair MRJ21 patch panels for 10Base-T, 100Base-T and 1000Base-T
- 2 pair MRJ21 patch panels for 10Base-T and 100Base-T

Description	Application	Part Number	I/O Cable(s)
24 port straight patch panel	4 pair (10/100/1000Base-T)	0-1777029-2	1
48 port straight patch panel	2 pair (10/100Base-T)	0-1777042-1	1 1
48 port straight patch panel	4 pair (10/100/1000Base-T)	0-1777041-1	1 1
48 port angled patch panel	4 pair (10/100/1000Base-T)	0-1777053-1	1 1

## Cat. 3 PCB Patch Panels for Telephone Applications



### Product Facts:

- 19", 1 U, telephone panel with 50 ports
- With rear cable management
- LSA+ compatible connecting blocks
- Connecting blocks for conductor diameter range of 0.4–0.65 mm

Description	Active Pins	Color	Part Number	I/O Cable(s)
50 port panel	3-4-5-6	light grey (RAL 7035)	0-1394060-1	–
50 port panel	3-4-5-6	black (RAL 9005)	0-1394060-2	–
I/O upgrade kit to full AMPTRAC			0-1435954-1	2 2 10



## Optical Fiber Patch Panels

### Product Facts:

- Available for MT-RJ, LC Duplex and SC Duplex systems
- Available in OM1 (62.5/125 µm), OM3 (50/125 µm) and singlemode
- Support field termination or use with MPO cassettes
- MT-RJ patch panel jacks and duplex LC SL Series inserts sold separately.

-X	Fibers
-1	Pairs straight
-2	Pairs flipped

Description	Fiber Type	Part Number	I/O Cable(s)
<b>Unloaded 19" Patch Panels for Cassettes/Adaptor Plates</b>			
1 U Frontplate for 3 MPO Snap-In Cassettes/Adaptor Plates	-	0-1671114-4	-
1 U Drawer for 3 MPO Snap-In Cassettes/Adaptor Plates	-	0-1671082-8	-
1 U Drawer for 4 MPO AMPTRAC Cassettes	-	0-1435608-1	-

### MT-RJ

MPO AMPTRAC Cassette, 6 ports (12 fibers)	OM3 50 µm XG	0-1435594-X	8
MPO AMPTRAC Cassette, 6 ports (12 fibers)	OM1 62.5 µm	0-1435672-X	8
MPO AMPTRAC Cassette, 6 ports (12 fibers)	Singlemode	0-1435673-X	8
1 U drawer for 24 MT-RJ Jacks (48 fibers)	MT-RJ Jacks sold separately*	0-1499645-1	3

### LC Duplex

MPO AMPTRAC Cassette, 6 ports (12 fibers)	OM3 50 µm XG	0-1499647-X	8
MPO AMPTRAC Cassette, 6 ports (12 fibers)	OM1 62.5 µm	0-1499648-X	8
MPO AMPTRAC Cassette, 6 ports (12 fibers)	Singlemode	0-1499649-X	8
1 U drawer for 24 LC Duplex Inserts (48 fibers)	LC Duplex Inserts sold sep.*	0-1499645-1	3

### SC Duplex

MPO Snap-In Cassette, 6 ports (12 fibers)	OM3 50 µm XG	0-1435688-X	9
MPO Snap-In Cassette, 6 ports (12 fibers)	OM1 62.5 µm	0-1435653-X	9
MPO Snap-In Cassette, 6 ports (12 fibers)	Singlemode	0-1435689-X	9
Snap-In Adaptor Plate, 6 ports (12 fibers)	Multimode (beige)	0-1435657-1	9
Snap-In Adaptor Plate, 6 ports (12 fibers)	Singlemode (blue)	0-1435657-2	9
Snap-In Adaptor Plate, 6 ports (12 fibers)	Singlemode APC (green)	0-1435657-3	9

\* Fiber patch panel 0-1499645-1 comes with 4 empty 6-Pack housings (accommodating max. 24 SL ports).

- MT-RJ Jacks (0-1278303-X or 0-1588880-X) and SL Housing (0-1374416-X) sold separately.
- LC Duplex Inserts incl. SL Housing (0-1435735-X or 0-1435799-X) sold separately.



Frontplate panel (3 Snap-In slots)



Drawer Panel (3 Snap-In slots)



MPO AMPTRAC Cassette (6 x MT-RJ)



Empty Drawer Panel (for 24 SL ports)



MPO Snap-In Cassette (6 x SC Duplex)



Snap-In Adaptor Plate (6 x SC Duplex)

## Cable Management Brackets and Bars

### Product Facts:

- Brackets and bars provide support for I/O cables or patch cords
- Front-mount to monitored patch panels and switches
- Adjustable universal brackets for use at left or right panel edge

Description	Part Number
Universal I/O cable bracket 40 mm, single-side-mount	0-1499659-1
Universal I/O cable bracket 100 mm, single-side-mount	0-1499659-2
Universal I/O cable bracket 448 mm, double-side-mount	0-1499659-3
Patch cord management bar	0-1711344-1
I/O cable retainer bracket for CISCO 3500, 48 port switch	0-1435779-1



## AMPTRAC I/O Cable Overview



B- -A	Length (in feet) (in meter)	
0- -1	3,3	1
0- -2	6,6	2
0- -3	9,8	3
0- -5	16,4	5

Y- -X	Length (in feet) (in meter)	
0- -4	4	1,2
0- -7	7	2,1
1- -0	10	3,1
1- -4	14	4,3
2- -5	25	7,6
5- -0	50	15,3
7- -5	75	22,9
9- -9	100	30,5

1st Connector (to AMPTRAC Analyzer)	2nd Connector (to Monitored Device), Application Examples	Part Number	
1 x DB25 (24 pos. used)	1 x HD22 (24 pos. used) → 24 port PCB Patch Panels (UTP+STP) → 24 port unloaded SL Jack Panel → all AMP CO Plus Patch Panels → all MRJ21 Patch Panels	1	B-1711353-A (EMEA) Y-1499507-X (USA)
1 x DB25 (24 pos. used)	1 x AMPMODU (24 pos. used) → 24 port Sensor Strips (for LAN switches or Panel Retro-fit)	2	B-1711493-A (EMEA) Y-1435845-X (USA)
1 x DB25 (24 pos. used)	4 x 110 P'n'P (6 pos.) → UTP Patch Panels (SL110C + 6Block) → FO Patch Panels (MT-RJ + LC Duplex)	3	Y-1499656-X
1 x AMPMODU (16 pos.) Use with DB25 Adaptor 0-1499641-1	1 x AMPMODU (16 pos.) → 16 port Sensor Strips (for LAN switches or Panel Retro-fit)	4	Y-1499686-X
1 x AMPMODU (12 pos.) Use with DB25 Adaptor 0-1499641-1	1 x AMPMODU (12 pos.) → 12 port Sensor Strips (for LAN switches or Panel Retro-fit)	5	Y-1499687-X
1 x AMPMODU (8 pos.) Use with DB25 Adaptor 0-1499641-1	1 x AMPMODU (8 pos.) → 8 port Sensor Strips (for LAN switches or Panel Retro-fit)	6	Y-1499688-X
1 x AMPMODU (6 pos.) Use with DB25 Adaptor 0-1499641-1	1 x AMPMODU (6 pos.) → 6 port Sensor Strips (for LAN switches or Panel Retro-fit)	7	Y-1499689-X
1 x AMPMODU (6 pos.) Use with DB25 Adaptor 0-1499641-1	1 x RJ-11 (6 pos.) → MPO Cassettes (MT-RJ + LC Duplex)	8	Y-1499684-X
1 x AMPMODU (6 pos.) Use with DB25 Adaptor 0-1499641-1	1 x 2,54 MTE (6 pos.) → MPO Cassettes (SC Duplex) → Snap-In Plates (SC Duplex)	9	Y-1499685-X
1 x AMPMODU (2 pos.) Use with DB25 Adaptor 0-1499641-1	1 x AMPMODU (2 pos.) → 2 port Sensor Strips (for LAN switch uplink ports)	10	Y-1499690-X

## Adaptor DB25 to 2 mm AMPMODU



### Product Facts:

- For use with 2.0 mm AMPMODU connectors less than 24 position
- Accepts any combination of 2.0 mm AMPMODU plugs (2–16 pos.) that adds up to 24 position
- Allows for use of all analyzer ports
- Built-in strain relief and cable management

Description	Part Number
Adaptor to DB25	0-1499641-1



## Twisted Pair Patch Cords Assemblies

## Product Facts:

- Meets or exceeds Cat. 6 performance specifications
- Patch cord assemblies contain 9th conductor that is connected to external probe molded into the modular plug boot
- Backward compatible to support Cat. 5E systems
- External probe makes contact with sensor pad on patch panel or switch
- Off-center probe designed to accommodate stacked-jack LAN switch configurations
- LSZH or CMR jacket
- Over-molded snagless boots (color matched)



Description	Color	Part Number
LSZH STP	white	B-1711186-A
LSZH UTP	white	B-1711351-A
CMR STP	white	Y-1499740-X
CMR UTP	white	Y-1435834-X
CMR UTP	black	Y-1435864-X
CMR UTP	grey	Y-1435835-X
CMR UTP	blue	Y-1435861-X
CMR UTP	green	Y-1435860-X
CMR UTP	red	Y-1435862-X
CMR UTP	yellow	Y-1435863-X
CMR UTP	orange	Y-1435918-X
CMR UTP	violet	Y-1435919-X

B- -A	Length (in feet) (in meter)	
0- -5	3,3	1
0- -6	6,6	2
0- -7	9,8	3
0- -8	16,4	5

Y- -X	Length (in feet) (in meter)	
0- -3	3	0,9
0- -5	5	1,5
0- -7	7	2,1
1- -0	10	3,1
1- -4	14	4,3
1- -6	16	4,9
2- -5	25	7,6

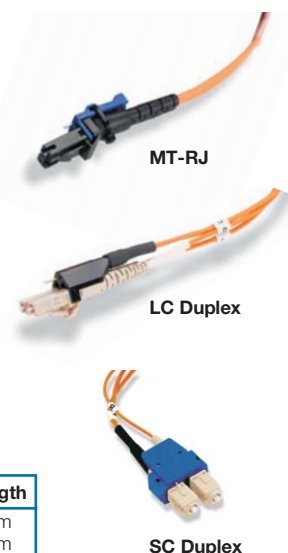
## Optical Fiber Patch Cord Assemblies

## Product Facts:

- Exceeds optical performance specifications for OM1 (62.5/125  $\mu$ m), OM3 (50/125  $\mu$ m) and single mode
- Available for MT-RJ, LC Duplex and SC Duplex assemblies
- Patch cord assemblies contain copper conductor that is connected to external probe
- External probe makes contact with sensor pad on patch panel or switch
- One wire/one probe design to monitor duplex fiber port as a single connection
- OFNR riser rated and listed cable
- Cable is a mini-tri-zip design for flexibility and small size

Description	OM3 50/125 $\mu$ m XG	OM1 62,5/125 $\mu$ m	Singlemode
MT-RJ to MT-RJ	Y-1435352-X	Y-1435351-X	Y-1435353-X
MT-RJ to LC Duplex	Y-1435793-X	Y-1435792-X	Y-1435794-X
MT-RJ to SC Duplex	Y-1435356-X	Y-1435355-X	Y-1435357-X
LC Duplex to LC Duplex	Y-1435790-X	Y-1435789-X	Y-1435791-X
LC Duplex to SC Duplex	Y-1435796-X	Y-1435795-X	Y-1435797-X
SC Duplex to SC Duplex	Y-1435725-X	Y-1435724-X	Y-1435726-X

Y- -X	Length
0- -1	1 m
0- -2	2 m
0- -3	3 m
0- -5	5 m
0- -7	7 m
1- -0	10 m



## Sensor Strips for LAN Electronics



### Product Facts:

- Sensor strips are readily available for a number of LAN electronic equipment types
- Easy mounting and installation
- The below table shows a selection of commonly used switch models
- Custom sensor strips can be designed on request to work with other LAN electronic equipment (LAN equipment manufacturer, model number, and model revision are required in determining the selection of the proper sensor strip)

Ports per Strip	Typical Switch	Part Number	I/O Cable(s)
24	ALCATEL OmniSwitch OS6624, 24-Port	0-1777005-1	2
2	ALCATEL 6648 Fiber Uplink Ports	0-1479890-1	10
24	CISCO 2950, 3500, 3750, 24-Port	0-1435346-5	2
24	CISCO 4000 and 6000, 48-Port Blades	0-1435346-1	2
24	CISCO 3500 and 4548, 48-Port	0-1435346-4	2
26	CISCO 2950, 24-Port + 2 Uplink Ports	0-1435827-1	2 10
16	CISCO GBIC, 16-Port Blade	0-1435820-1	4
24	CISCO MT-RJ 6000, 24-Port Blade	0-1435937-1	2
48	CISCO 6148, 48 ports	0-1499651-1	2 2
2	CISCO 3500 Fiber Uplink Ports	0-1435818-1	10
16	EXTREME Summit 48i	0-1435927-1	4
12	EXTREME Summit 1i & 5i and Alpine 3808	0-1435952-1	5
24	NORTEL BAYSTACK 450-24T, 24-Port	0-1435933-1	2
24	NORTEL BAYSTACK 470-48T, 48-Port	0-1435939-1	2
48	NORTEL BAYSTACK 5520	0-1499660-1	2 2
24	NORTEL PASSPORT 8648, 24-Port	0-1777014-1	2
12	Generic Stacked, 14mm Spacing, 12-Port	0-1777019-1	5
2	Generic Fiber Uplink Ports	0-1435950-1	10

**Important note:** Port footprint of LAN electronic model may be changed by manufacturer without notification! To prevent sensor pad mismatch, always double-check your actual LAN electronics model with scaled sensor strip template (PDF). For switch models not listed or additional information ask your local AMP NETCONNECT sales contact.

## Patch Panel Retrofit Kits



### Product Facts:

- Kits are designed to retrofit existing installations of AMP NETCONNECT connectivity
- Most of the common patch panels can be retrofitted with these self-adhesive sensor strips
- For more information ask you local AMP NETCONNECT sales contact

## Why using AMPTRAC Intelligent Infrastructure Management System?

The AMPTRAC Infrastructure Manager bridges the gap between Network Management Software and Physical Layer Management, and concurrently revolutionizes the way networks are controlled and managed. AMPTRAC IM illustratively shows the physical topology of your data center, communication rooms and wiring closets, while at the same time helping you to manage and troubleshoot your network connectivity with real-time monitoring and documentation.

Among the many benefits of the AMPTRAC System are:

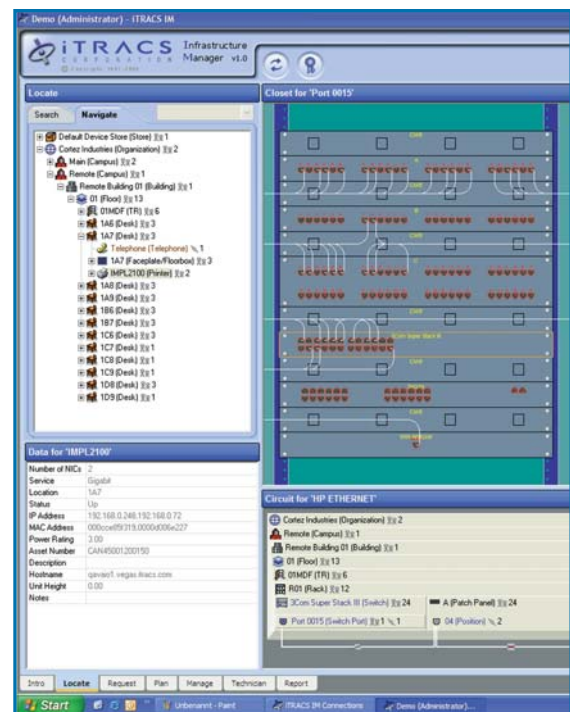
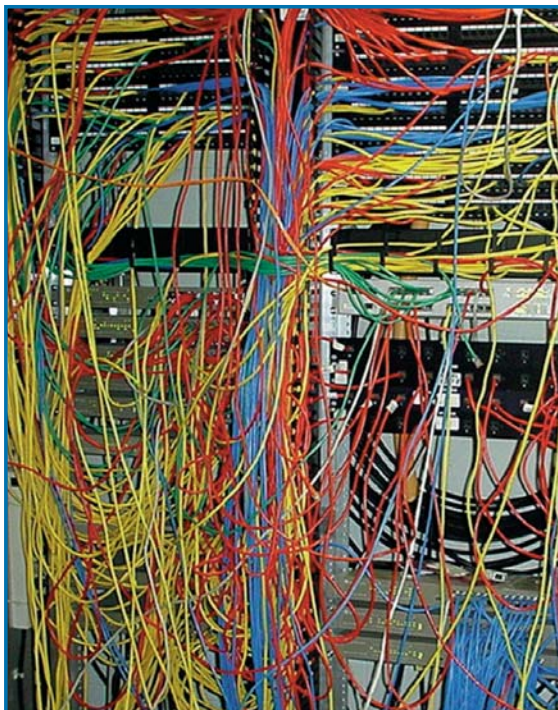
- the increase of MAC accuracy and productivity
- the reduction of downtime
- the increase of network security
- the reduction of costly mistakes
- the improvement of asset utilization

Or simply said, turn

THIS

into

THIS!



## Take the Guess Work Out of Your MACs



## AMP NETCONNECT Regional Headquarters:

### North America

Harrisburg, PA, USA  
Ph: +1-800-553-0938  
Fx: +1-717-986-7406

### Latin America

Buenos Aires, Argentina  
Ph: +54-11-4733-2200  
Fx: +54-11-4733-2282

### Europe

Kessel-Lo, Belgium  
Ph: +32-16-35-1011  
Fx: +32-16-35-2188

### Mid East & Africa

Cergy-Pontoise, France  
Ph: +33-1-3420-2122  
Fx: +33-1-3420-2268

### Asia

Hong Kong, China  
Ph: +852-2735-1628  
Fx: +852-2735-1625

### Pacific

Sydney, Australia  
Ph: +61-2-9554-2600  
Fx: +61-2-9554-2519

## AMP NETCONNECT in Europe, Mid East, Africa and India:

### Austria – Vienna

Ph: +43-1-90560-1204  
Fx: +43-1-90560-1270

### Belgium – Kessel-Lo

Ph: +32-16-35-1011  
Fx: +32-16-35-2188

### Bulgaria – Sofia

Ph: +359-2-971-2152  
Fx: +359-2-971-2153

### Czech Rep./Slov. – Kurim

Ph: +420-541-162-112  
Fx: +420-541-162-132

### Denmark – Glostrup

Ph: +45-70-15-52-00  
Fx: +45-43-44-14-14

### Finland – Helsinki

Ph: +358-95-12-34-20  
Fx: +358-95-12-34-250

### France – Cergy-Pontoise

Ph: +33-1-3420-2122  
Fx: +33-1-3420-2268

### Germany – Langen

Ph: +49-6103-709-1547  
Fx: +49-6103-709-1219

### Greece/Cyprus – Athens

Ph: +30-210-9370-396  
Fx: +30-210-9370-655

### Hungary – Budapest

Ph: +36-1-289-1007  
Fx: +36-1-289-1010

### India – Bangalore

Ph: +91-80-4011-5000  
Fx: +91-80-4011-5030

### Italy – Collegno (Torino)

Ph: +39-011-4012-111  
Fx: +39-011-4012-268

### Lithuania – Vilnius

Ph: +370-5-2131-402  
Fx: +370-5-2131-403

### Netherlands – Den Bosch

Ph: +31-73-6246-246  
Fx: +31-73-6246-958

### Norway – Nesbru

Ph: +47-66-77-88-99  
Fx: +47-66-77-88-55

### Poland – Warsaw

Ph: +48-22-4576-700  
Fx: +48-22-4576-720

### Romania – Bucharest

Ph: +40-21-311-3479  
Fx: +40-21-312-0574

### Russia – Moscow

Ph: +7-495-790-7902  
Fx: +7-495-721-1894

### Spain – Barcelona

Ph: +34-93-291-0330  
Fx: +34-93-291-0608

### Sweden – Upplands Väsby

Ph: +46-8-5072-5000  
Fx: +46-8-5072-5001

### Switzerland – Steinach

Ph: +41-71-447-0-447  
Fx: +41-71-447-0-423

### Turkey – Istanbul

Ph: +90-212-281-8181  
Fx: +90-212-281-8184

### Ukraine – Kiev

Ph: +380-44-206-2265  
Fx: +380-44-206-2264

### UK – Stanmore, Middx

Ph: +44-208-420-8140  
Fx: +44-208-954-7467



Our commitment. Your advantage.